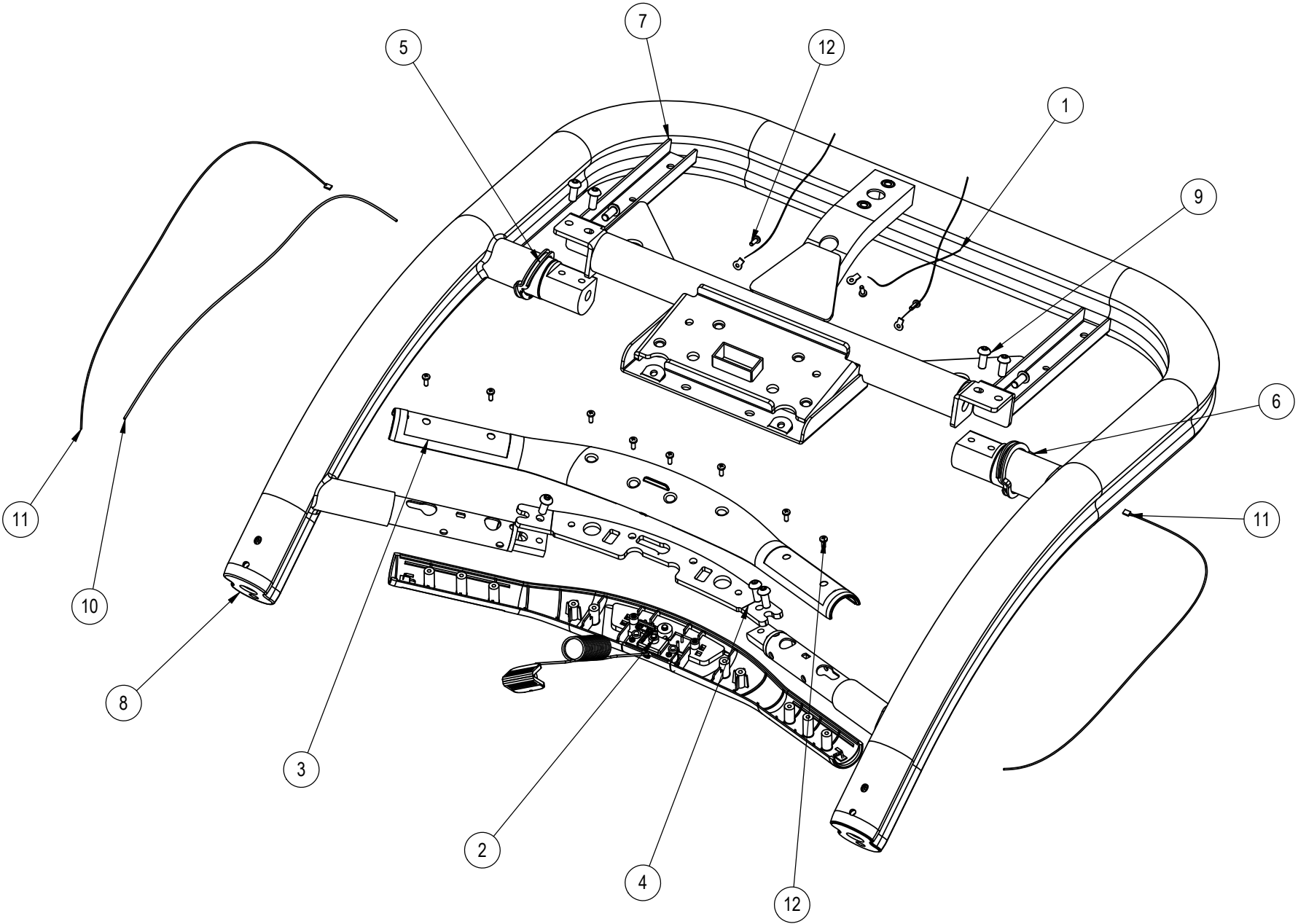


REVISION HISTORY				
REV	DATE	DESCRIPTION	ECO	BY
A	08-01-07	INITIAL RELEASE OF PRODUCTION	11699	SJ



ITEM NO.	STAR TRAC P/N	INRAY P/N	DESCRIPTION	Default/ QTY.
1	740-6016	740-6016	Assy, Cable, Generic GND, Sport Tread	3
2	740-6096	STDP4000	ASSY, HOTBAR, UPPER SECTION	1
3	740-6097	740-6097	ASSY, HOTBAR, LOWER SECTION	1
4	740-6098	STDP1500	PLATE, HOT BAR SUPPORT	1
5	740-6099	STDP3311-TRC	GASKET, DISPLA-RAILS, TRC, RIGHT	1
6	740-6100	STDP3310-TRC	GASKET, DISPLA-RAILS, TRC LEFT	1
7	740-6101	STDP1600	WELDMENT, DISPLAY STRUCTURE	1
8	740-6102	STDP0200JS	HANDRAIL, FRONT, DIP, TRc	1
9	740-6502	PNLM8*20*20■19	SCREW, PNLM8*20*20	9
10	740-6012	740-6012	Assy, Cable, Stop Switch Extension	1
11	740-6035	740-6035	Assy, Cable, CHR, Sport Tread	2
12	740-6502	GB6560M4*12■2	SCREW, GB6560M4*12	11

NOTICE OF PROPRIETARY INFORMATION
 THIS DOCUMENT SHALL NOT BE REPRODUCED NOR SHALL THE INFORMATION CONTAINED HEREIN BE USED BY OR DISCLOSED TO OTHER EXCEPT AS EXPRESSLY AUTHORIZED BY UNISEN INC. D.B.A. STAR TRAC.

DOCUMENT STATUS:
RELEASE

NOTES:

CLASS OF WORK	UNLESS OTHERWISE SPECIFIED DIMS ARE IN mm. TOLERANCES FOR MEASURE OF LENGTH ARE:							
	0.5 to 3	>3 to 6	>6 to 30	>30 to 120	>120 to 400	>400 to 1000	>1000 to 2000	>2000
FINE	±0.05	±0.05	±0.1	±0.15	±0.2	±0.3	±0.5	----
MEDIUM	±0.1	±0.1	±0.2	±0.3	±0.5	±0.8	±1.2	±2
COARSE	±0.2	±0.3	±0.5	±0.8	±1.2	±2	±3	±4
VERY COARSE	----	±0.5	±1	±1.5	±2.5	±4	±6	±8

MATERIAL		THIRD ANGLE PROJECTION	
FINISH			
VENDOR:		P/N: 740-6095	

UNISEN, INC. DBA

 14410 Myford Road
 Irvine CA 92606

STARTRAC PART NO: **740-6095** REV: **A**

TITLE: **ASSY. HANRAIL & HOTBAR**

SCALE: 1:6 | SHEET 1 OF 1 | SHEET SIZE: B